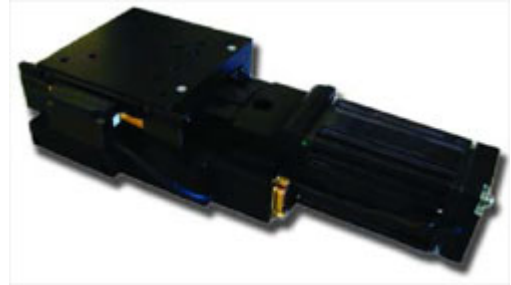
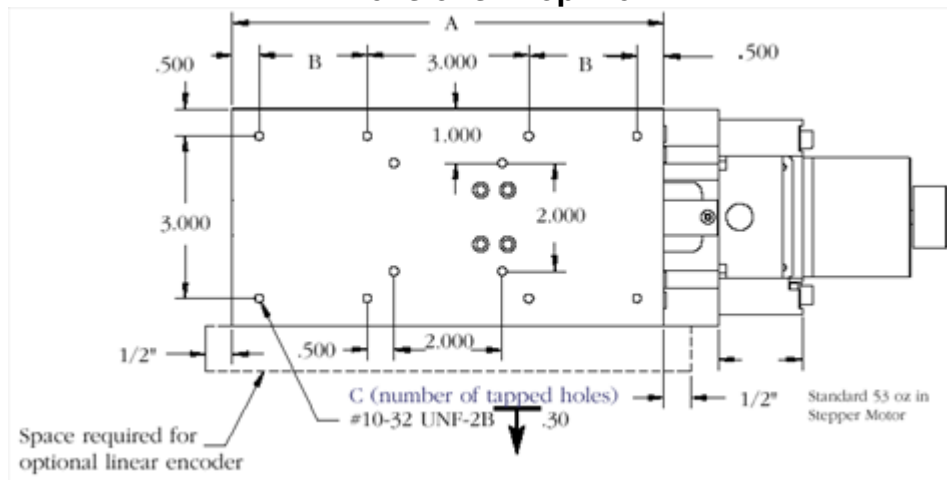


LMB-200™ Stage

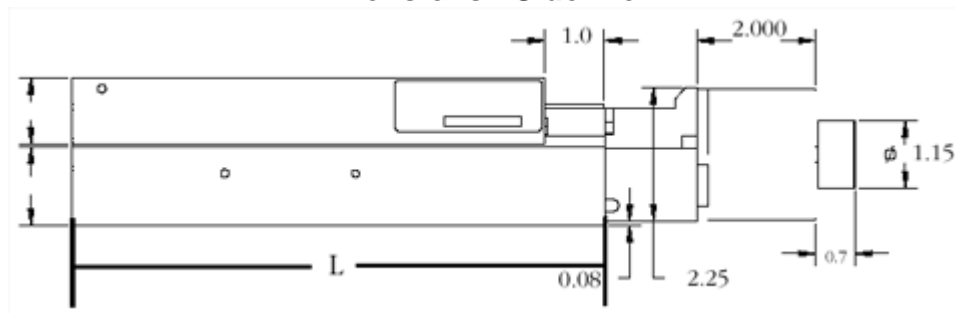


Product Dimensions

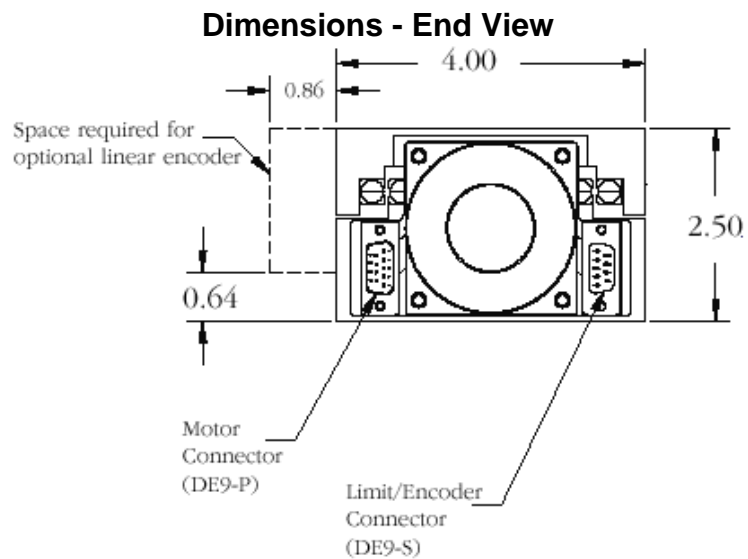
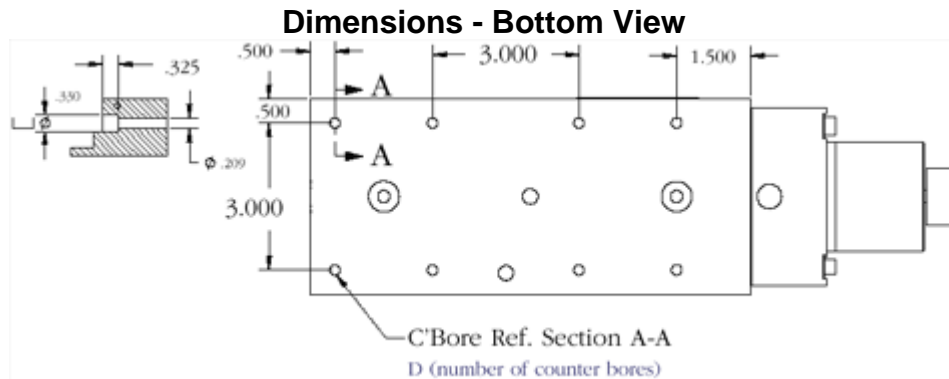
Dimensions - Top View



Dimensions - Side View



LMB-200™ Stage



LMB-200™ Stage

Specifications

Travel (inches)		2
Positional Accuracy (μm)	w/linear encoders open loop	8 13
Bi-directional Repeatability (μm)	w/linear encoder open loop	± 1 count 1 μm
Flatness & Straightness (μm)		5
Pitch & Yaw (arc-seconds)		15
Load Capacity (kg) ¹		75
Mass (kg)	Moving Total	0.5 2.5

Configurations

BallScrew	Lead (mm)	2, 5
Motor	Stepper (oz-in) 400 step/rev 200 step/rev	118, others available 53, 100, others available
	Servo ³	brush, brushless

Options

Encoder	Rotary (counts/rev.)	2000, 4000
	Linear ($\mu\text{m}/\text{count}$) ³	5, 1, 0.5, 0.1

NEMA 23 in-line brake available for vertical applications.

¹ Please contact our Applications Engineers for loads exceeding 35kg.