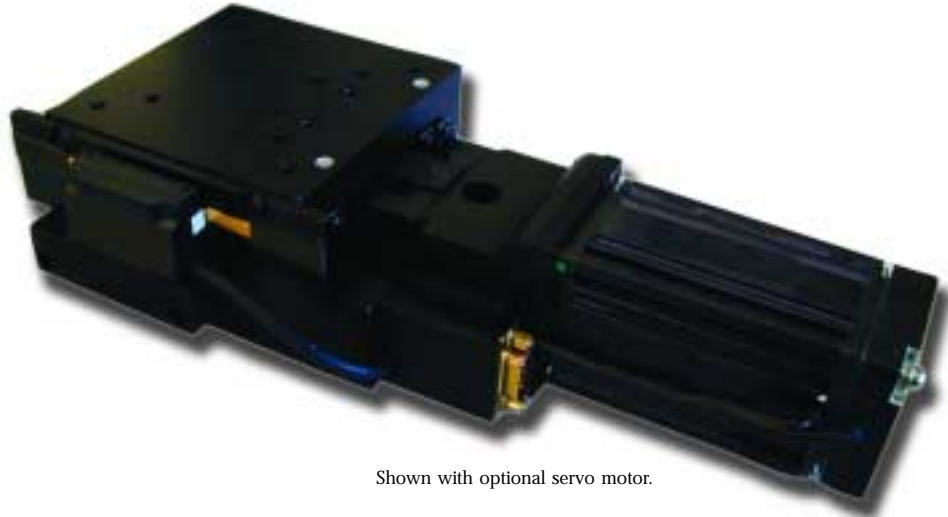


# LMB™ Stage

## Features

- Precision crossed roller ways for high stiffness
- Center-driven ballscrew design is only 2.5" high
- 2" to 10" travel versions
- Precision ballscrew
- Ideal for vertical applications



Shown with optional servo motor.

## Ballscrew Driven Stage

The DPS LMB stage takes our standard LM™ stage and upgrades it in several ways. First and most importantly the enhancement adds a precision ground preloaded ballscrew inside the same cross section. The added ballscrew increases axial stiffness and the preloaded nature allows linear encoders to be used in servo applications.

Duty cycle, life, and speed are also greatly improved with this upgrade. Leads are available in 2 and 5mm standard

sizes. A larger thrust bearing is also used to increase axial load carrying capabilities. These enhancements make this stage ideal to be used in vertical applications.

Optional inline brakes are available to prevent the stage from back driving. The LMB ballscrew driven stage has also added pinch cover design, eliminating any safety concerns. Travels are available from 2 to 10 inches.

### LMB STAGE SPECIFICATIONS

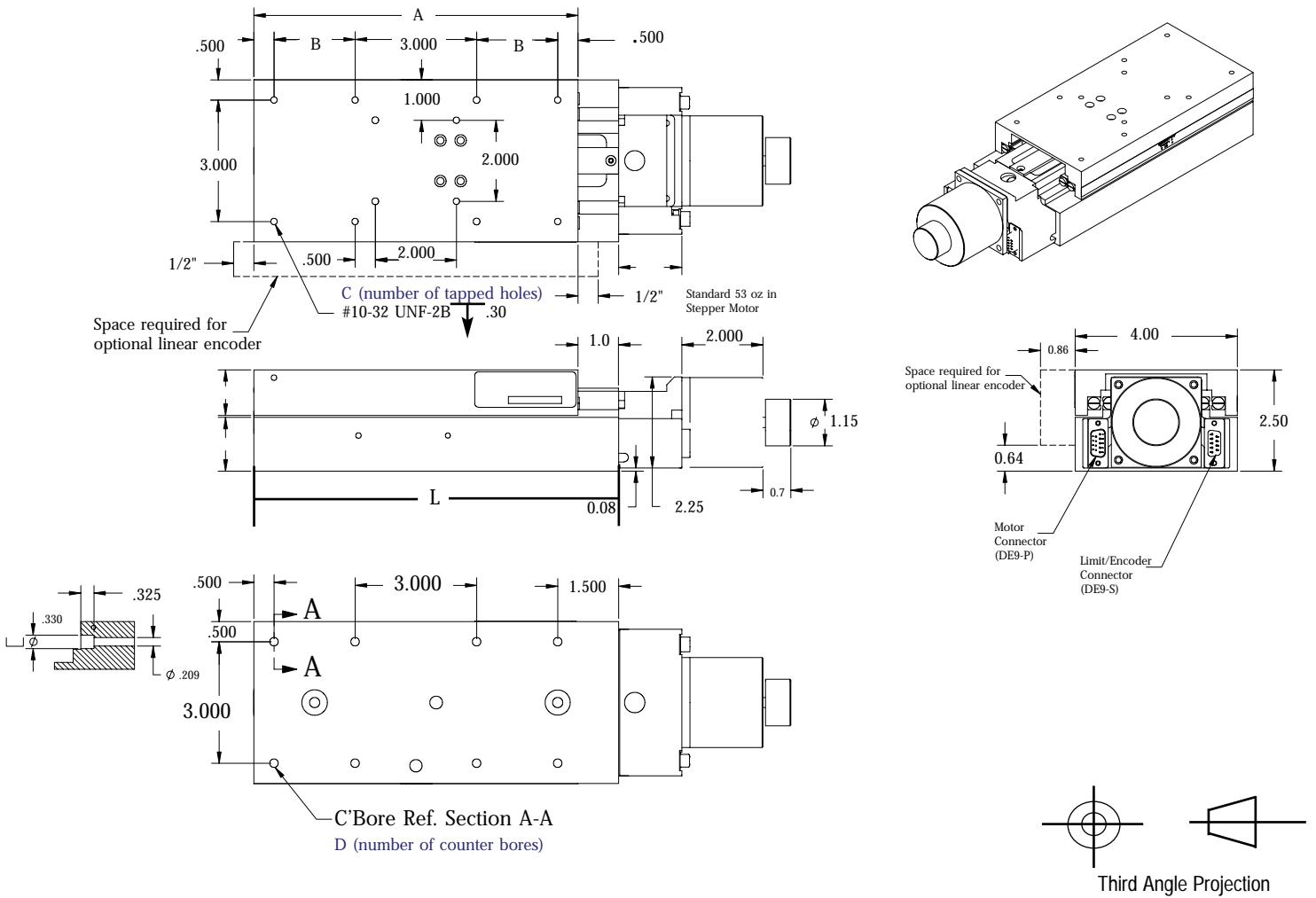
Specification	LMB-200	LMB-400	LMB-600	LMB-800	LMB-1000
<b>Travel (inches)</b>	2	4	6	8	10
<b>Positional Accuracy</b>					
(microns) w/linear encoders	8	10	15	20	25
<b>Positional Accuracy</b>					
(microns) open loop	13	15	20	25	30
<b>Bi-directional Repeatability (micron, for all)</b>					
with linear encoder			±1 count		
open loop			1 micron		
<b>Flatness &amp; Straightness (micron)</b>	5	6	8	10	12
<b>Pitch &amp; Yaw (arc-seconds)</b>	15	20	25	30	35
<b>Load Capacity (kg)*</b>	75	95	125	145	175
<b>Mass (kg)</b>					
moving	0.5	0.7	0.9	1.1	1.4
total	2.5	3.2	3.9	4.6	5.2
<b>Configuration</b>					
<b>Ballscrew</b>					
lead (mm)	2	5			
<b>Motor</b>					
Stepper (oz-in) 400 step/rev.	118		others available		
Stepper (oz-in) 200 step/rev.	53	100	others available		
Servo	brush	brushless			
<b>Options</b>					
<b>Encoder</b>					
rotary (counts/rev.)	2000	4000			
linear (microns/count)	5	1	0.5	0.1	

NEMA 23 in-line brake available for vertical applications.

\* Please contact our Applications Engineers for loads exceeding 35kg.



LMB STAGE SPECIFICATIONS



Model	Travel	Length (L)	A	B	C	D
LMB-200-SM	2	5	4	—	8	4
LMB-400-SM	4	7	6	1	12	8
LMB-600-SM	6	9	8	2	12	8
LMB-800-SM	8	11	10	3	12	8
LMB-1000-SM	10	13	12	4	12	8

Moving The World, One Nanometer At A Time.™

PR012/Rev 00/04-01  
 All tradenames, the Danaher logo, NEAT logo, and tag line are trademarks of Danaher Corporation or its subsidiaries.  
 © 2001 Danaher Corporation. All rights reserved.

7C RAYMOND AVENUE • SALEM, NH 03079  
 603.893.0588 • Fax: 603.893.8280  
 800.227.1066 • www.NEAT.com

